

# COMPANY PROFILE





# INDUSTRIAL COMPUTER CONTROL ENGINEERING

## | Content

About us	4	Services	31
Partners & Clients	11		
Production	17		
Process Control & Automation	27		



# About Us



# About Us

- Established in **1988**.
- Started with development and production of own **PLC & SCADA**.
- Today **ICCE is a turnkey electrical engineering company** specialized in the delivery of **electrical equipment & automation systems for industrial and infrastructure facilities**.



# About Us

More than 35 years of experience and our in-house capability allows us to offer complete solution on the turnkey basis:

## Services

- Design
- Engineering
- Mounting & Installation
- Commissioning & Start up
- Training & Technical Support

## Electrical Equipment

- MV Switchgear
- LV Distribution Cubicles
- Motor Control Centre & PLC Cubicles

## Process Control & Automation

- PLC & SCADA systems
- IT/Networks,
- Instrumentation



# About Us

Mainly, we are present in Industry and Infrastructure, especially in:

## Bulk Material Handling

- Storage (silo & flat)
- Conveying
- Stacking/reclaiming, loading/unloading
- Dosing, weighing, mixing

## Sugar Industry

- Sugar beet/cane processing plants
- Chromatography plants
- Ethanol plants

## Environment

- Water Treatment Plants
- Wastewater Treatment Plants
- Wells, Pumping Stations
- Distribution Networks

# About Us

Mainly, we are present in Industry and Infrastructure, especially in:

## Hydraulic Systems

- Hydropower Plants
- Thermopower Plants
- Dams & Ship Locks

## Building Material

- Lime Production
- Aerated Concrete
- Brick Production
- Asphalt Mixing Plants

## Other

- Onshore Power Supply
- Automotive
- Tire & Rubber
- Glass
- Food & Beverage

# About Us

Why we are a **good choice?**

## Our People

- We consider our people our greatest asset.
- Core team of experts working together for more than 15 years.

## Knowledge

Unified knowledge of electrical engineering in one place:

- Medium voltage
- Low voltage
- Automation
- IT

## Other

- Our in-house capability allows us to offer a single-source solution for electrical engineering under our complete control



# About Us

Solution  
Partner

Automation  
Drives

**SIEMENS**

**Siemens  
Diamond Partner**



**Schneider Electric  
Certified Alliance  
Partner**

SIVACON

Technology  
Partner

**SIEMENS**

**Siemens  
Sivacon S8 Technology  
Partner**



**UL 508A INDUSTRIAL  
CONTROL PANEL  
FABRICATOR**

# About Us



Conformité Européenne (CE)



Eurasian Conformity (EAC)



ISO 9001

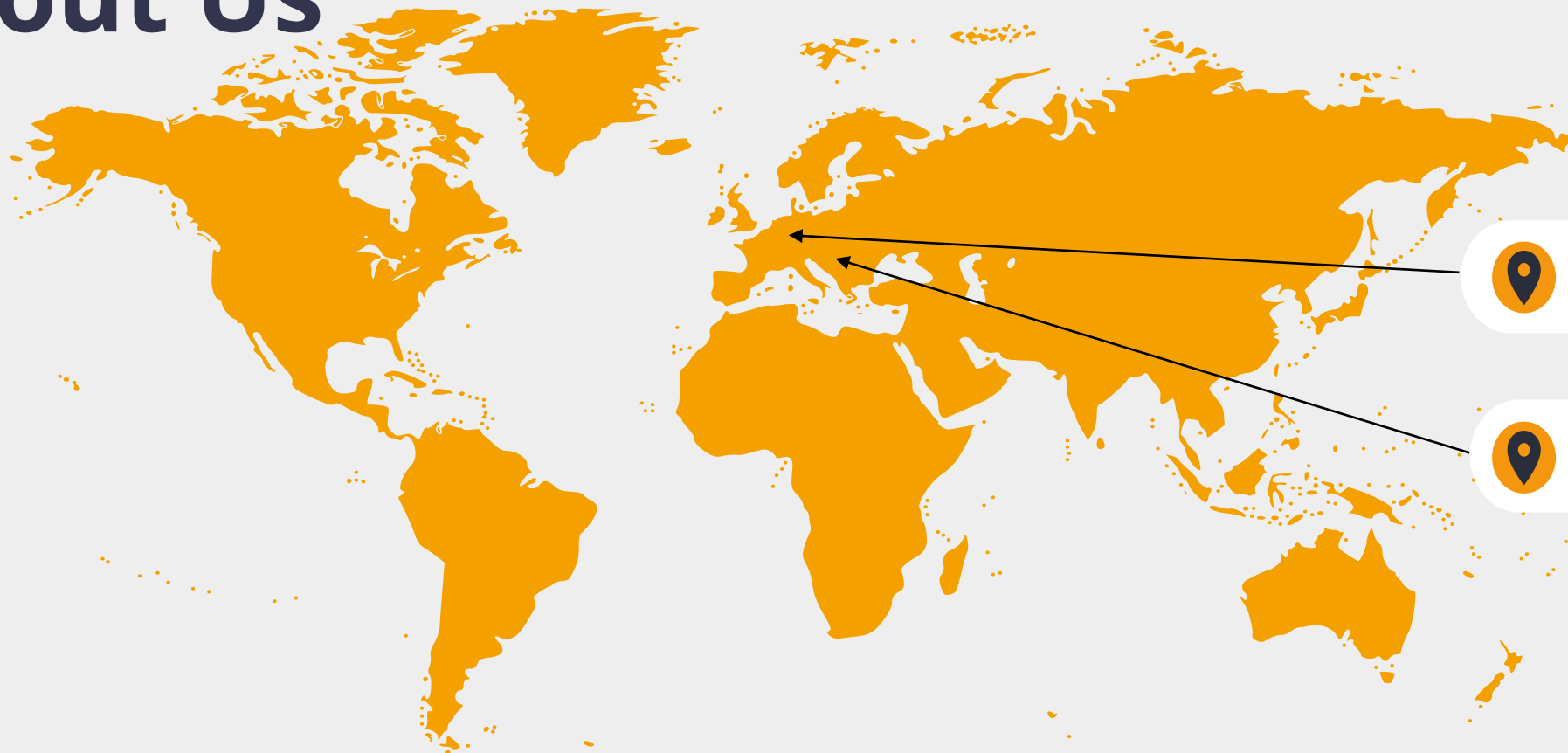


ISO 14001



ISO 45001

# About Us



**Diez Germany**  
**ICCE GmbH**



**Belgrade, Serbia**  
**ICCE d.o.o.**



# Partners & Clients





# Our Partners

- ICCE develops long lasting relationships with its partners.
- Collaboration with world leading manufacturers of equipment and services allows us to provide the best possible solutions for our clients and to maximize their satisfaction.
- Together, we work to help our clients to solve their process challenges and optimize their business.



# Our Clients

- We are particularly proud on our Clients list. Our Clients are our partners, and their satisfaction is our top priority.
- Collaboration with them has been the leading mover of our growth and success.
- ICCE has the privilege to work with the respectable clients such as:



# Our Clients



## **FAM Minerals & Mining GmbH, Germany**

Manufacturer of complete transport chain for bulk materials. From extraction, conveying, loading and storage to processing of various materials.



## **Sucres & Denrées, France**

Leading World Sugar Trader



## **Strabag SE, Austria**

One of Europe's leading construction groups



## **Xella International Group, Germany**

One of the world's largest manufacturer of aerated concrete products



## **DSD Noell GmbH, Germany**

Manufacturer of hydromechanical steel equipment

# Our Clients



## **Bedeschi SpA, Italy**

Bulk handling and Mining, Container  
Logistics and Bricks provider



## **Brock Graain Systems, USA**

Technology for grain processing



## **Carmeuse, Belgium**

Worldwide leading producer of lime



## **Schade Lagertechnik, Germany**

Manufacturer of equipment for  
bulk material stockyards and  
blending bed technology



## **Sepro Mineral Systems, Canada**

Supplier of mineral processing and  
aggregate equipment



# Our Clients



## **Fives Cail, France**

An international industrial engineering group



## **Siemens AG**

The largest industrial manufacturing company in Europe and global market leader in industrial automation and industrial software



## **PORR, Austria**

One of the biggest European construction companies



## **Schneider Electric SE**

French multinational company that specializes in digital automation and energy management.

# Production



# Production

For us, it is very important to deliver the best possible solutions to our clients. That is why we continuously invest in production and testing equipment.

- In last few years we have invested more than € 1,500,000 in new offices and production facility.
- Production and assembly of equipment is done in a plant of total area of 1000m<sup>2</sup>.
- Energy independent. Energy supply is provided from our own solar power plant.





# Production

For creating high quality products, we use machines as:

- CNC machines for hole drilling
- NC machines for din rail and cable duct cutting
- Automatic line for length measurement, cutting and labelling of conductors
- Laser tag printing machine



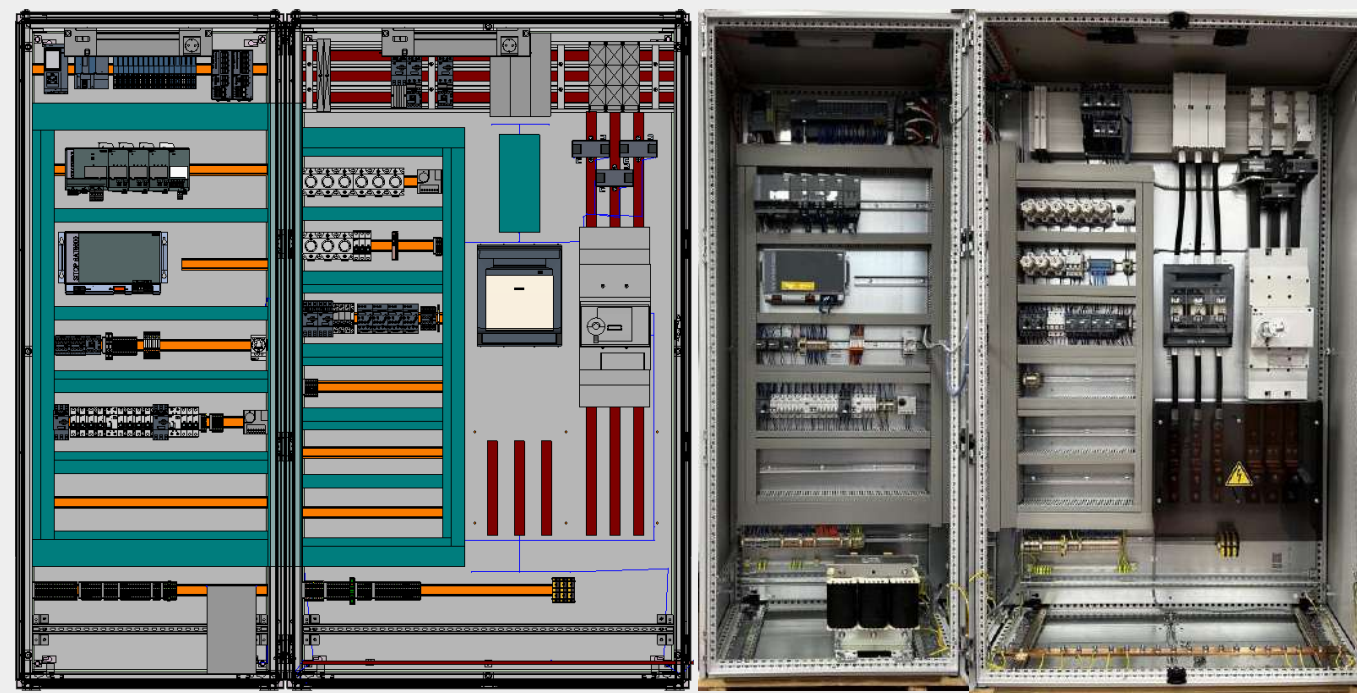


# Production

All machines are integrated with software:

- EPLAN and
- Pro Panel

which ensures the generation of a  
Digital twin before production.



Electrical panel Digital twin

# Production

**Our production program includes:**

- Low Voltage Distribution Cubicles
- Motor Control Centres Cubicles
- PLC Cubicles
- Control Panels
- Synoptic Panels
- Local Control Boxes, ...
- E-houses





# Production



Medium Voltage Switchgear



Low Voltage Switchgear

# Production



Motor Control Centre & PLC Cubicles



# Production



Local control panels



Pult control cabinet

# Production



E-houses



# Production



E-houses are delivered completely equipped & tested.



# Process Control & Automation





# Process Control & Automation

We are not software developers. We are specialists in automation.

## WE KNOW HOW YOUR INDUSTRY WORKS!

- Behind us are thousands of installed Control Systems for different uses and from various manufacturers.
- Our references include complete software/hardware solutions, from stand-alone installations to distributed control systems with highly disposable SCADA solutions.
- We have realized applications from few to 100.000 I/O signals.



# Process Control & Automation

Our solutions are based on:

## Hardware

PLC controllers or DCS systems produced by:

- SIEMENS
- Schneider Electric
- Allen Bredly
- Other producers

## Software

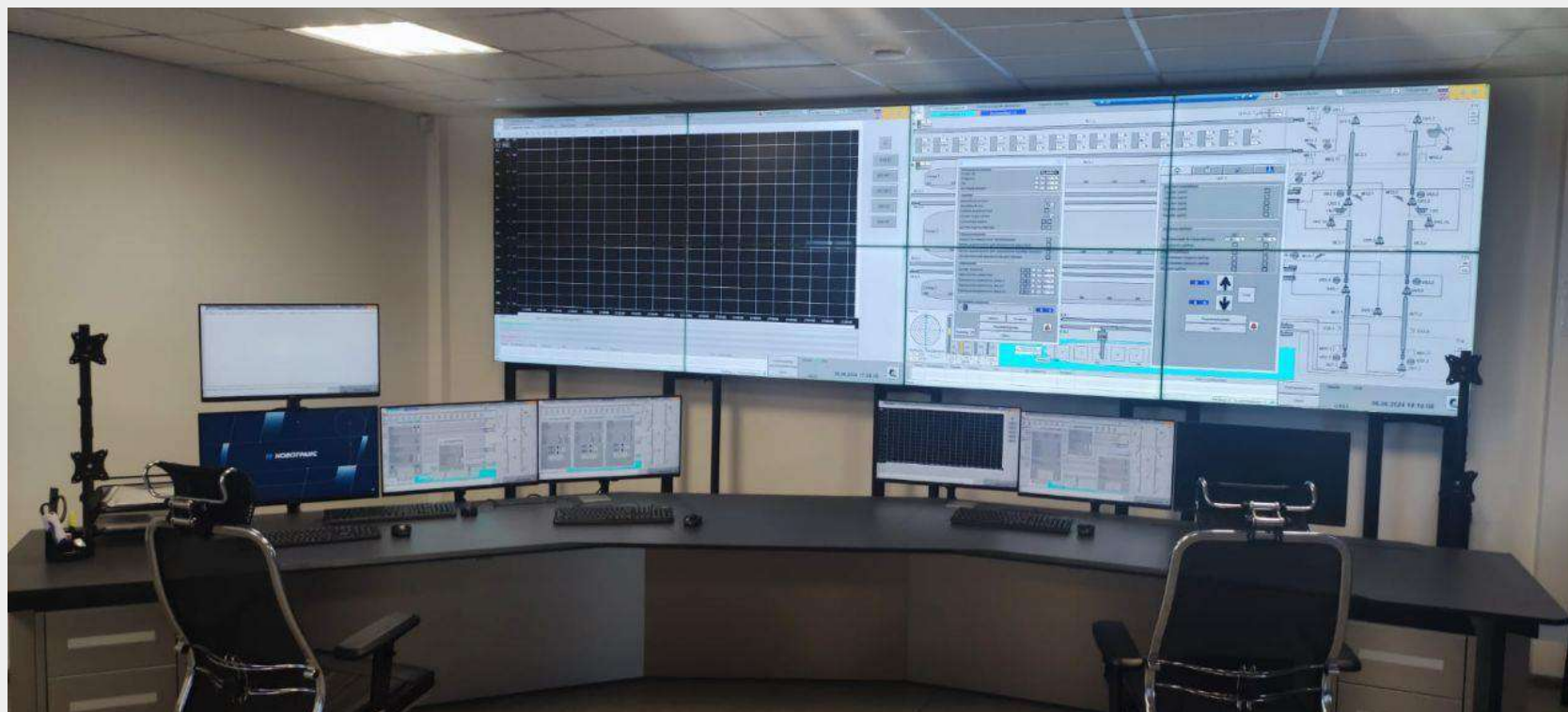
We provide complete software solutions for PLCs, DCS and SCADA systems from different manufacturers

## IT/Network

Our IT department develops application for data exchanging between industrial processes and outside world.

# Process Control & Automation

Control Rooms





A photograph of three people (two men and one woman) sitting on a grey sofa in a modern office setting, engaged in a meeting. They are looking at documents and laptops. A semi-transparent white banner with the word 'Services' and an orange vertical bar is overlaid on the image.

# Services



# Services

- Today, many companies can produce quality equipment.
- However, our 35 years of experience tells us that the key to success on a project is an experienced and efficient team that will carry the project from start to finish, regardless of the turbulences that arise during its implementation.
- We approach the services we offer within **projects a little differently!**



# Services

## Design

We assemble a dedicated team for each project, complying with IEC, UL, or GOST standards.

We use:

- E-PLAN
- ProPanel
- AutoCAD
- Revit

## Mounting & Installation

- Experienced site managers oversee the montage.
- Our engineers for mounting, installation, and commissioning are available worldwide.

## Commissioning & Startup

- Commissioning is done by experienced engineers from the start, reducing time spent

## Training & Technical Support:

- We provide on-site staff training during functional testing and commissioning

# Services

## Delivery of Equipment:

- As standard, our offer includes EXW delivery.
- At the client`s request, our experienced logistics team can organize packaging, transportation and delivery anywhere in the world.



# Thank You

## SERBIA

ICCE Beograd d.o.o.

Oblakovska 21, 11000 Belgrade

Tel: +381 11 3691 690

E-mail: [office@icce.com](mailto:office@icce.com)

Web: [www.icce.com](http://www.icce.com)

PIB 101288014

MB 07429665

## GERMANY

ICCE GmbH

An der Vogelheck 13, 65582 Diez

Tel: +49 6432 640 9531

E-mail: [office@icce.com](mailto:office@icce.com)

Web: [www.icce.com](http://www.icce.com)

Registergericht AG Montabaur,

HRB 28386

USt-IdNr: DE352252426