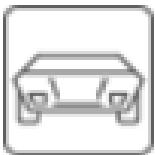




Smart Turning Solutions



car industry



optical



*micro
mechanic*



*aeronautic
aerospace*



*medical
dental*



tooling

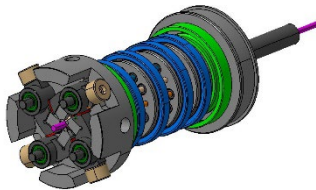
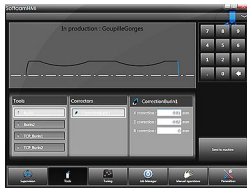
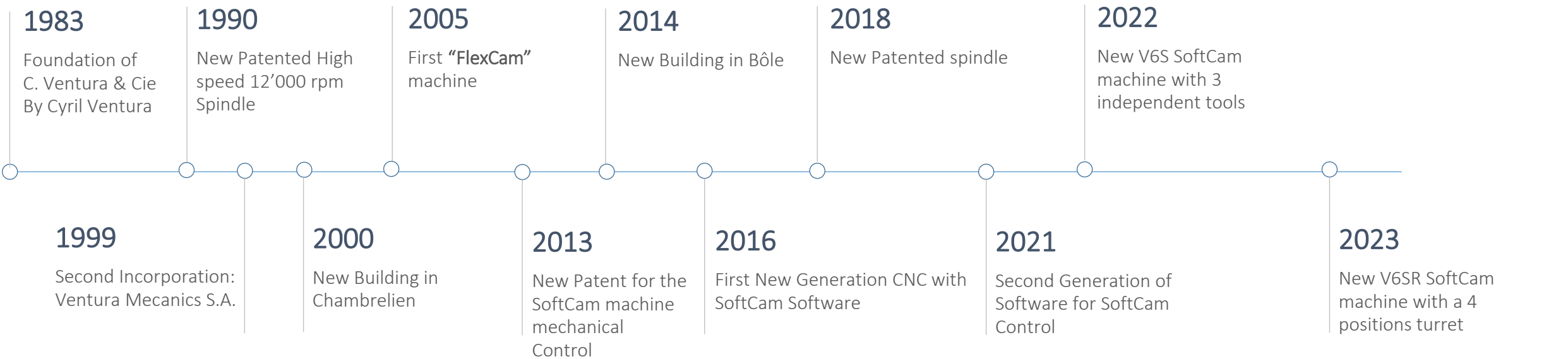


equipment



defense

Our history





VISION

We are a **leader** in the overhaul and sale of rotary tool-heads and **innovative retrofitting** of rotating tool machines.



MISSION

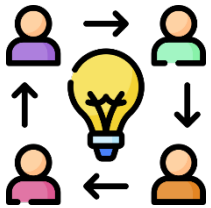
To supply our customers with **high-quality machines and tool-heads** to increase equipment life and machine performance.



VALUES

Focused on **the needs of our customers** and the **well-being of our employees**, we invest in the future through training and innovation.

Facts and figures



15 +

Employees



400 +

Clients



600+

Tool-heads
overhaul and
manufacturing
per year



25 +

Machines retrofit
and overhaul per
year



40 +

Export Countries



80% +

Export turnover

Machines



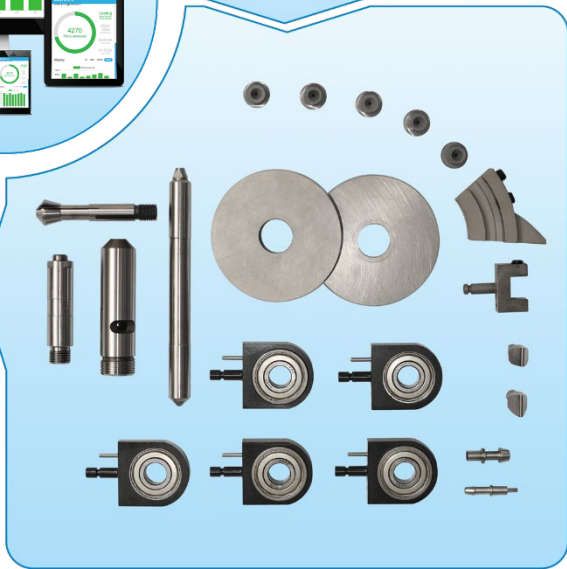
Tool-heads



Spare Parts

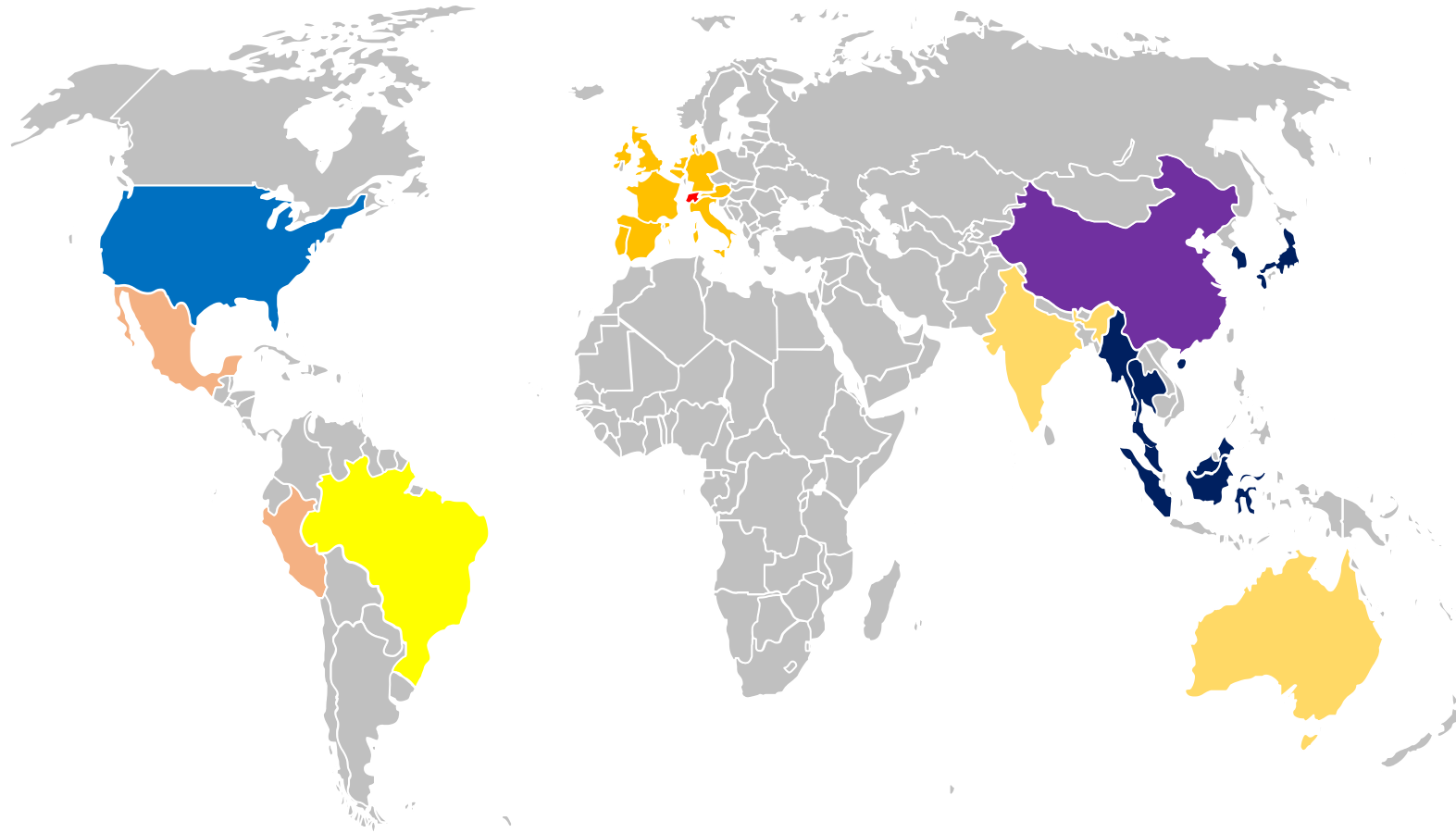


Layouts



Digital Solutions





Some famous customers

VENTURATM

Esterline

Honeywell

Godrej

BRAUN

SWATCH GROUP

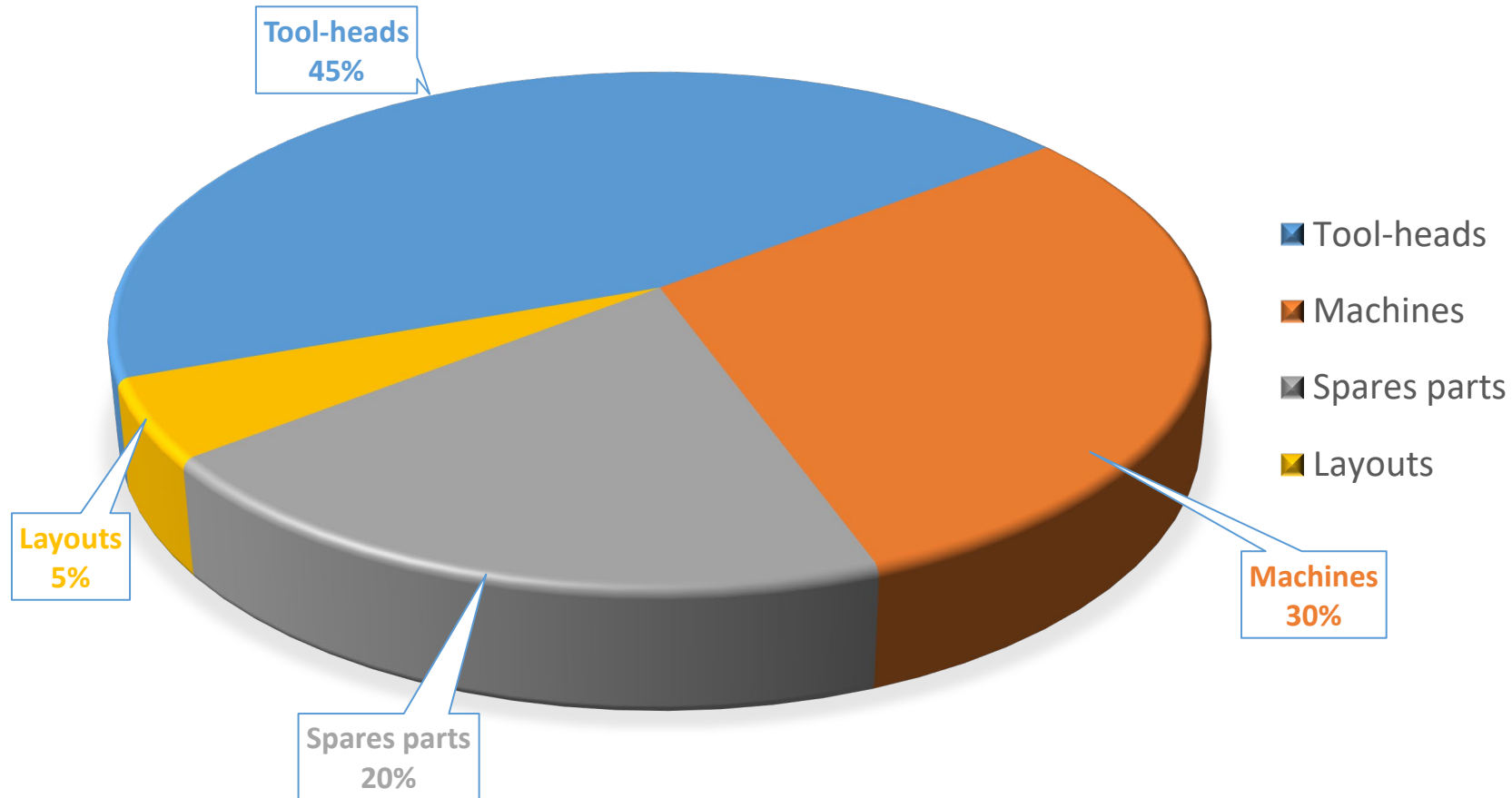
HARTING

EAT•N

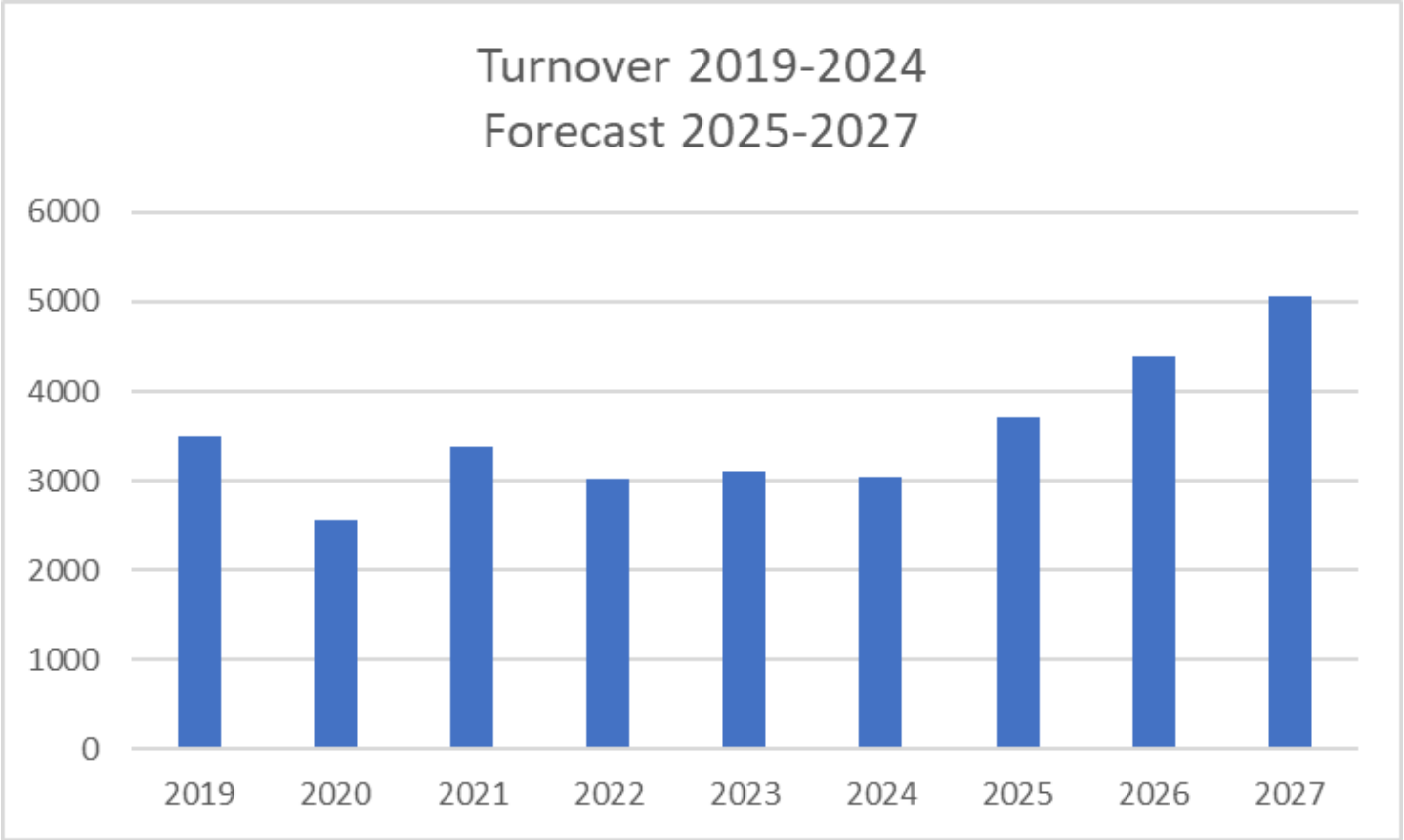
Laubacher

adax

During the years, the segmentation remains almost the same.
Particularity, Ventura generates 30% of sales in machines business.

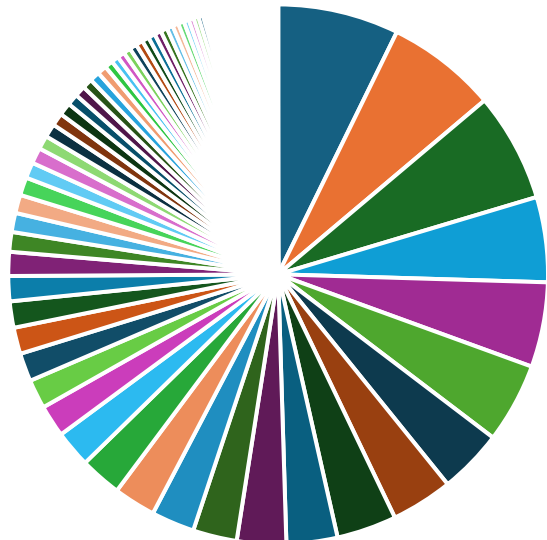


We plan an increase of sales forecast mainly due to the increase of our new machines SoftCam lines that interest more and more companies thanks to the very fast cycle time

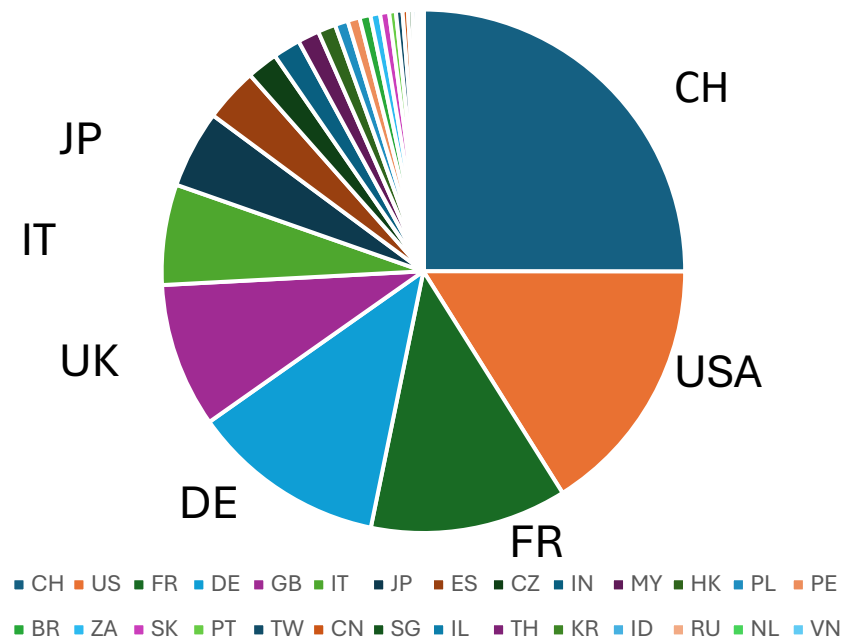


We plan an increase of sales forecast mainly due to the increase of our new machines SoftCam lines that interest more and more companies thanks to the very fast cycle time

Turnover 2023 per Client



Turnover 2023 per Country



Our Machines

VENTURATM

Old cam machine



Mecanical Cams machines



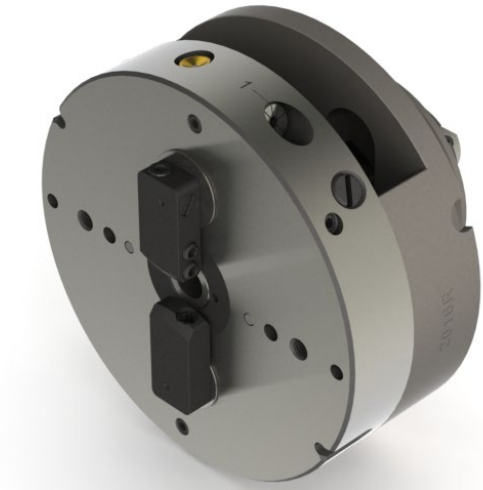
CNC Virtual Cams machines



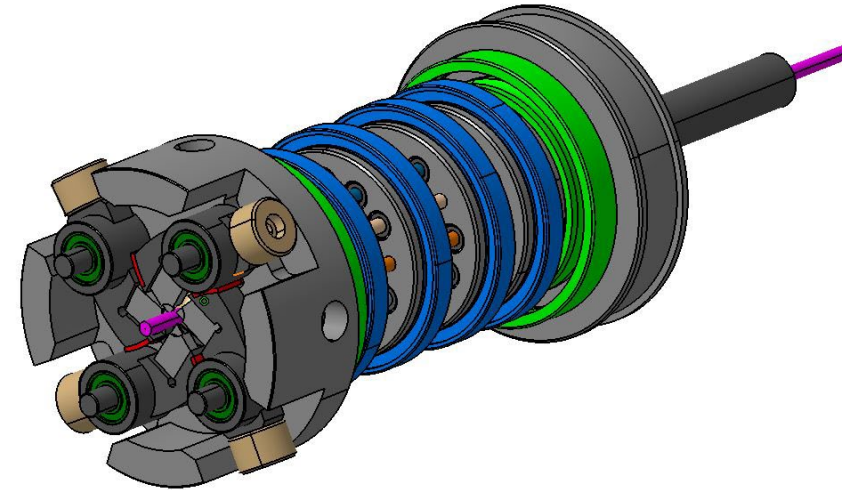
Our Spindles

VENTURATM

Mecanical Spindle with 2 dependent tools

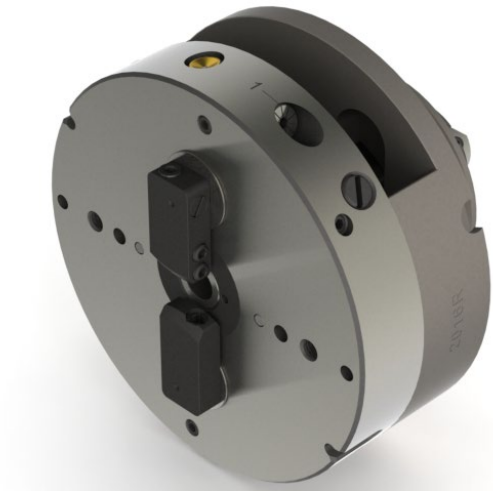


Spindle with 4 independent tools



Our Spindles innovations

Mecanical Spindle with 2 dependent tools



Spindle with hexagonal holders for using inserts instead of tungsten carbide conventional tools



SoftCam



Industrie 4.0



- Mobile counter-collet
- Counter-drilling
- Cross-drilling (SO)
- Counter-Milling (CO & SO)
- Threading-tapping (C= & SO)
- Knurling (CO & SO)

Mechanical

- ▶ Cams
- ▶ Cam shaft speed : *constant*
- ▶ Tool-head speed : *by pulley changing*
- ▶ Straightener speed : *by pulley changing*
- ▶ Simple knurling possible with tool-head



Vario

- ▶ Cams
- ▶ Cam Shaft speed : *constant*
- ▶ Tool-head speed : *programmable*
- ▶ Straightener speed : *programmable*
- ▶ Attachments speed : *programmable*
- ▶ Simple knurling possible with tool-head



Flex

- ▶ Cam shaft speed : *programmable by segments*
- ▶ Tool-head speed : *programmable*
- ▶ Straightener speed : *programmable*
- ▶ Attachments speed : *programmable*
- ▶ Simple knurling possible with tool-head



SoftCam (CN)

- ▶ No Cams
- ▶ Cycle time programmable by interactive language
- ▶ Tool-head speed : *programmable*
- ▶ Straightener speed : *programmable*
- ▶ Attachments speed : *programmable*
- ▶ Simple knurling possible with tool-head



COMING SOON

- Mobile counter-collet
- Counter-drilling
- Cross-drilling (SO)
- Counter-Milling (CO & SO)
- Threading-tapping (C= & SO)
- Knurling (CO & SO)

Mechanical

- ▶ Cams
- ▶ Cam shaft speed : *constant*
- ▶ Tool-head speed : *by pulley changing*
- ▶ Straightener speed : *by pulley changing*
- ▶ Simple knurling possible with tool-head

Vario

- ▶ Cams
- ▶ Cam Shaft speed : *constant*
- ▶ Tool-head speed : *programmable*
- ▶ Straightener speed : *programmable*
- ▶ Attachments speed : *programmable*
- ▶ Simple knurling possible with tool-head

Flex

- ▶ Cam shaft speed : *programmable by segments*
- ▶ Tool-head speed : *programmable*
- ▶ Straightener speed : *programmable*
- ▶ Attachments speed : *programmable*
- ▶ Simple knurling possible with tool-head

SoftCam (CN)

- ▶ No Cams
- ▶ Cycle time programmable by interactive language
- ▶ Tool-head speed : *programmable*
- ▶ Straightener speed : *programmable*
- ▶ Attachments speed : *programmable*
- ▶ Simple knurling possible with tool-head

V2

Ø 0.15 - 4.00 mm
Option : PM mobile counter-collet
2 turning cutting-tools

V4 - V5

Ø 0.15 - 4.00 mm
2 Turning cutting-tools

V6S

Ø 0.90 - 6.00 mm
3 turning cutting-tools

V6SR1A

Ø 0.90 - 6.00 mm
3 turning cutting tools

Production stopped by Escomatic

Partially stopped by Escomatic

Production stopped by Escomatic

COMING SOON

Blue:
stopped by
Esco,
Serviced by
Ventura

Pink: in
competition
with Esco

V6 FlexCam Machine



The fastest cam machine in the market

- 3 independent tools
- Counter-operations
- Back operations

Cam Machine mainly used in the following countries:

- Germany
- Switzerland
- France
- USA
- Japan

Machine developed for mass production

V6 SoftCam Machine



3 Fully Independent Turning Tools

3 Servo-Motors – 3 Independent Axes
For More Complex Machining and More Complex Parts

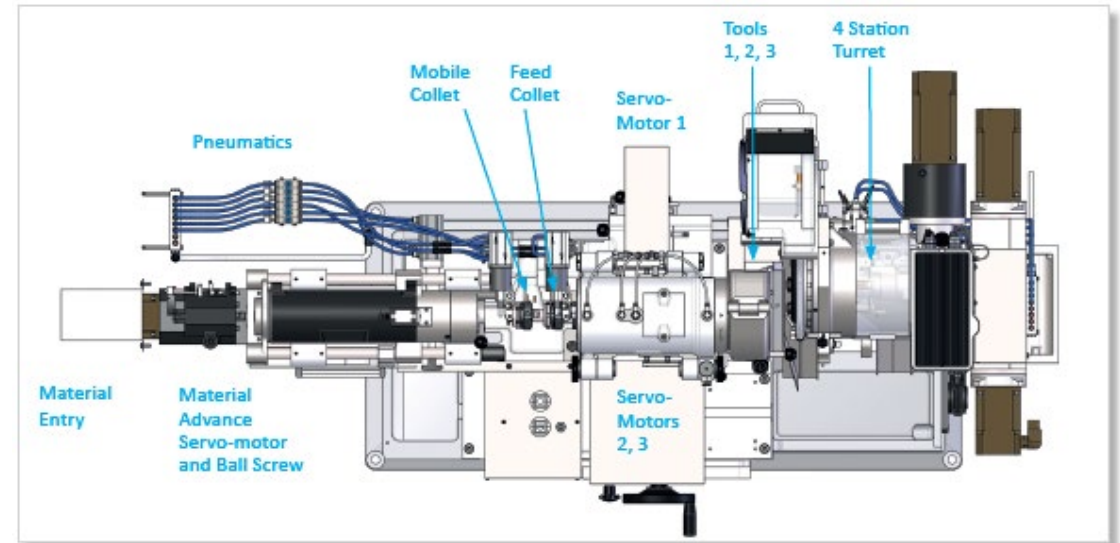
For Parts
Up To \varnothing 6.35 mm
Diameter

Material Advance Controlled by Accurate Ball Screw

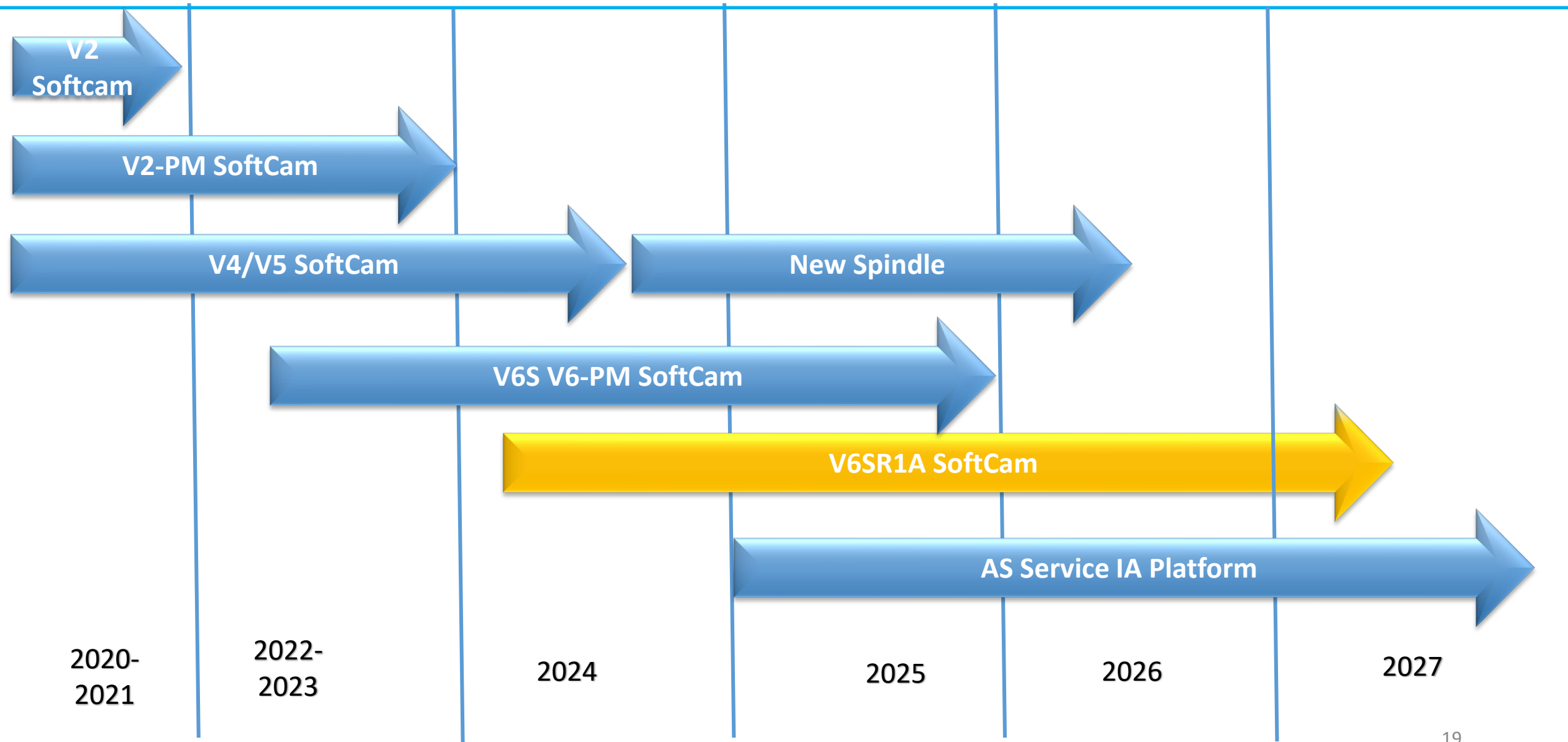
For Higher Precision and Larger Diameter Material

Optional 4 Station Turret

3 Independent Spindles – Mobile Counter Collet
For Front, Back and Transverse Operations



New Products road map



VENTURA®

VENTURA®

7 Softcam CNC Lathes – 7 Flexcam Automatic Lathes

Retrofitted on Escomatic® D2/D4/D5/D6 Base Models

For Precision Turning and Machining of Small Diameter Parts			
Ø 7 mm			
6 mm			
5 mm			
4 mm	14 pcs/min. 16 pcs/min.		
3 mm	14 pcs/min. 10 pcs/min.	25 pcs/min. 16 pcs/min. 3 pcs/min.	25 pcs/min. 3 pcs/min.
2 mm	14 pcs/min. 6 pcs/min.	20 pcs/min. 50 pcs/min.	20 pcs/min. 16 pcs/min. 3 pcs/min.
1 mm		11 pcs/min. 3 pcs/min.	11 pcs/min. 50 pcs/min.
Simple Parts ←			

Up To 6.35 mm Diameter and 124 mm Length			
		3 pcs/min. 50 pcs/min.	
	3 pcs/min.		3 pcs/min.
14 pcs/min. 16 pcs/min.	20 pcs/min.	16 pcs/min.	25 pcs/min.
14 pcs/min. 10 pcs/min.			
14 pcs/min. 25 pcs/min.	25 pcs/min.	16 pcs/min.	16 pcs/min. 20 pcs/min.
6 pcs/min.			
	25 pcs/min. 3 pcs/min.		11 pcs/min.
	11 pcs/min.		
			→ Complex Parts

V2



V2-PM



V2-PMF



Overview

V4/V5



Overview

V6



V6-PM



V6-SR1A

Softcam

Some links for watching viedeos:

Testimonial English subtitles :

<https://www.youtube.com/watch?v=t1KQWdrDSQk>

VENTURA V2 PMF SOFTCAM :

https://www.youtube.com/watch?v=Ah44M2acc_c

VENTURA V2 PM SOFTCAM :

<https://www.youtube.com/watch?v=3mbTWMImRps>

Thank you for your attention